

freerider®

SPARE PARTS MANUAL

Mayfair 8 Deluxe

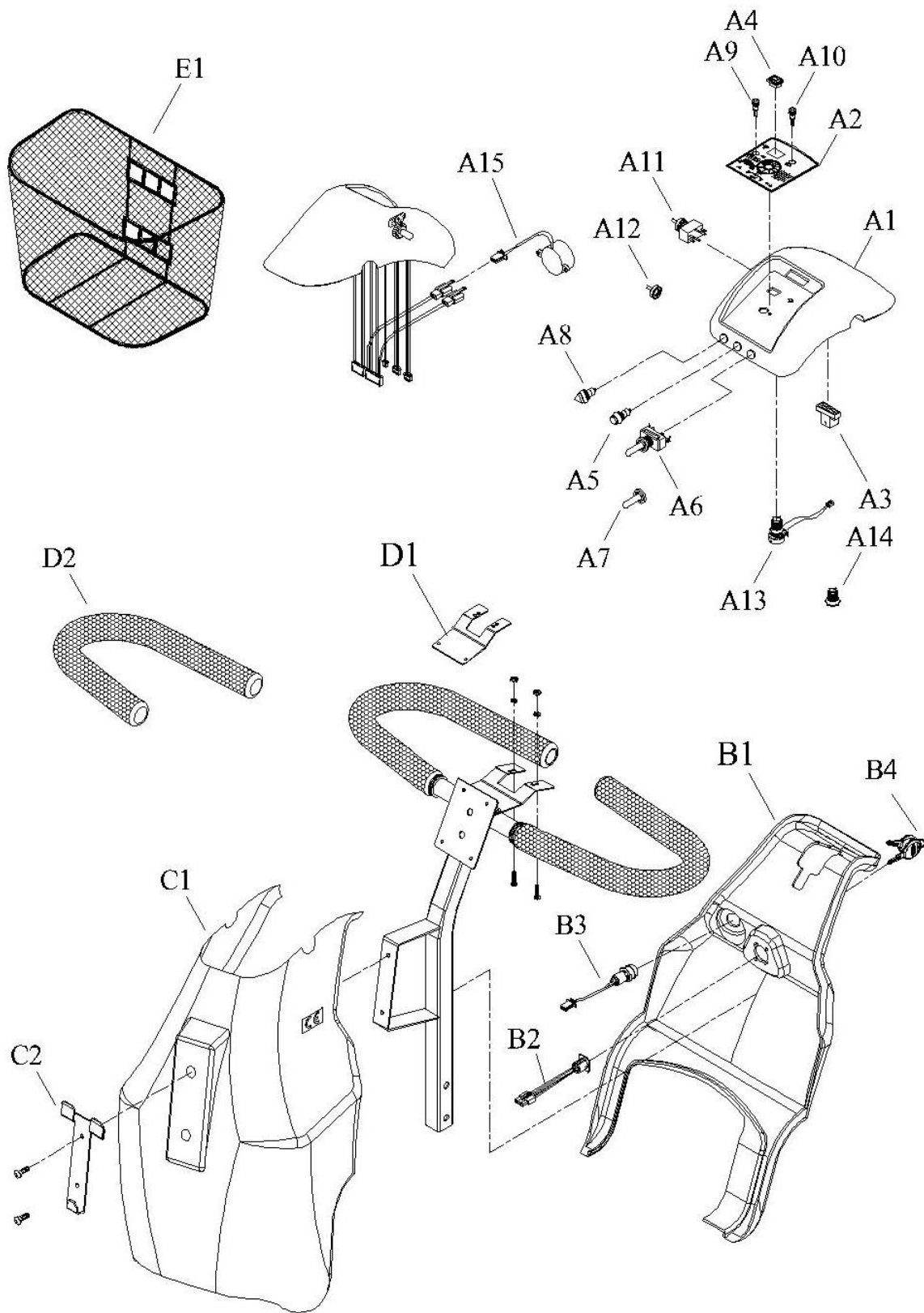
FR-S08 FR168-4S2b



INDEX

1. **HANDLEBAR BAR ASSEMBLY-----P.4**
2. **CHASSIS COVER ASSEMBLY-----P.6**
3. **FRONT CHASSIS ASSEMBLY-----P.8**
4. **REAR CHASSIS ASSEMBLY-DRIVE SYSTEM----P.12**
5. **STEERING-----P.14**
6. **HAND BRAKE ASSEMBLY-----P.18**
7. **SEAT ASSEMBLY-----P.18**
8. **CONSOLE AND WRING SYSTEM-----P.20**

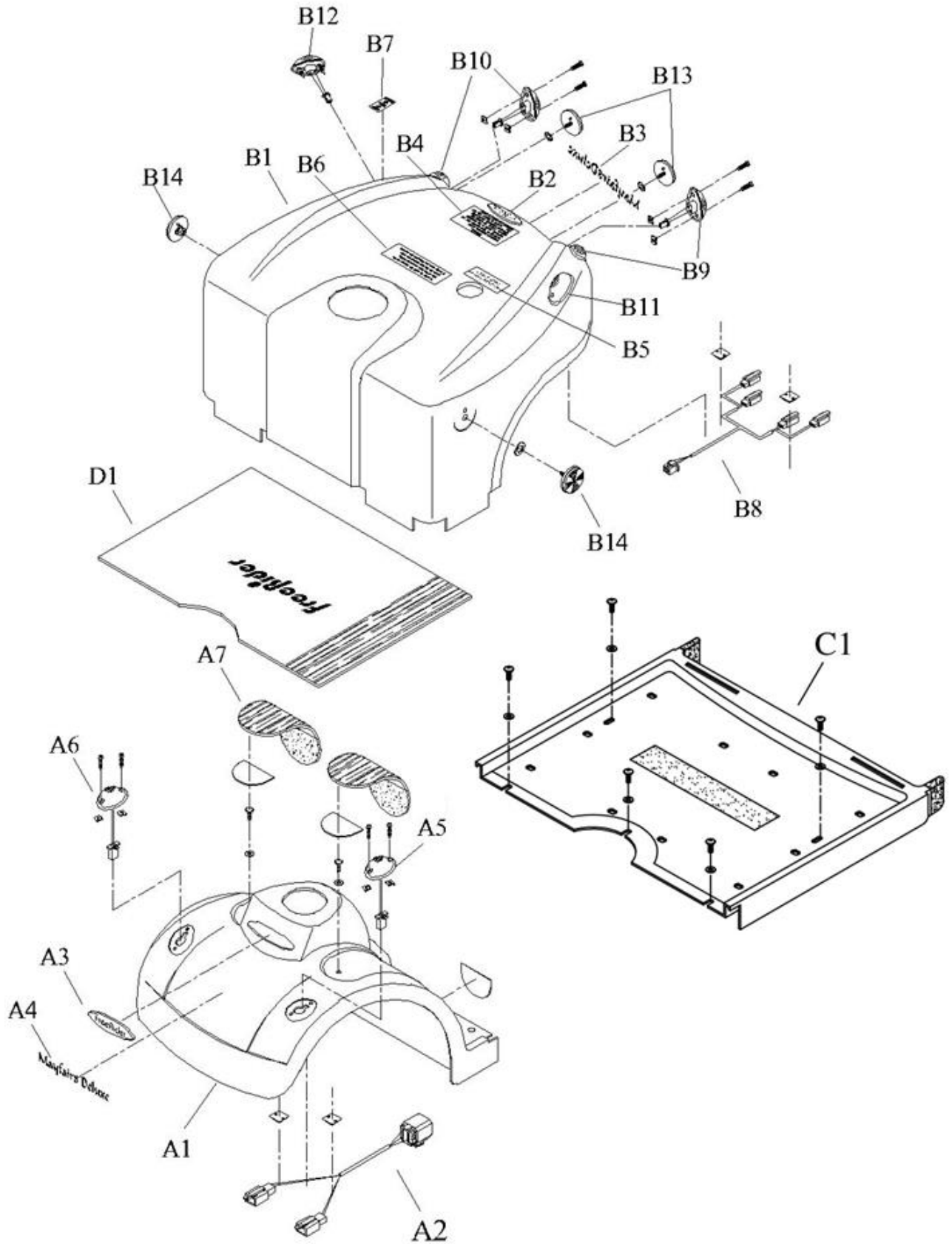
1. HANDLE BAR ASSEMBLY



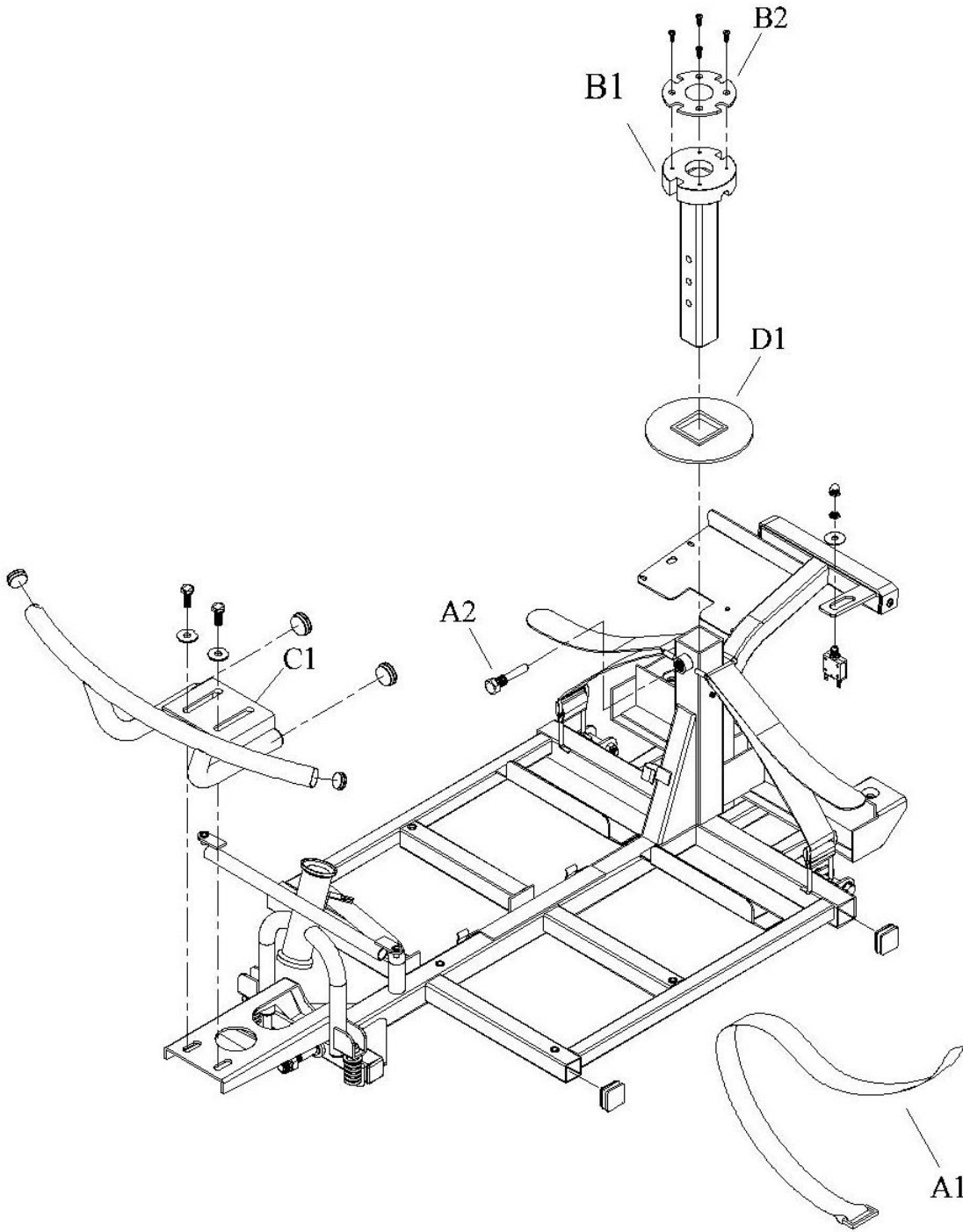
1. HANDLE BAR ASSEMBLY

販售 記號	項目	品號	中文品名	英文品名	數量	備註	GBP
	A1-E1						
	A1-A13	AA01-0807-D2	把手上蓋總成	Top console assy.	1		
	A1		把手上蓋	Top console	1		
	A2	PL01-0121-A	面板貼紙	Sticker	1		
	A3	PKE1-0714	LED電量顯示器	LED battery gauge	1		
	A4	PAE1-0800	大燈開關小總成	Light switch assy.	1		
	A5	PKE1-0103	喇叭開關	Horn switch	1		
	A6	PKE1-0105	搖頭開關	Direction indicator switch	1		
	A7	PP01-0200	遙頭開關蓋	Toggle switch cap	1		
	A8	PKE1-0101	三角形警示開關	Warning switch	1		
	A9	PKE1-0802	指示燈(紅)	LED status red	1		
	A10	PKE1-0800	指示燈(綠)	LED status green	1		
	A11	PKE1-0104	全速/半速開關	Hi/Lo speed switch	1		
	A12	PP01-0201	全半速開關蓋	Cap	1		
	A13	PAE1-0100-MO	20KVR小總成	20KVR	1	含速度旋鈕	
	A14	PP01-0500	速度旋鈕	Speed knob	1		
	A15	PKE1-0603	喇叭	Horn	1		
	B1-B3	AA02-1001-D2	把手後蓋總成	Tiller rear cover assy.	1		
	B1		把手後蓋	Tiller rear cover	1		
	B2	PAE1-0404-NP-A00	充電座小總成	Charge socket assy.	1		
	B3	PAE1-1003	鑰匙開關小總成	Key switch	1		
	B4	PM90-0900	鑰匙	Key	1		
	C1	AA03-0800-D2	把手前蓋總成	Tiller front cover assy.	1		
	C2	PM03-0300-D1	籃子掛鉤	Basket hook	1		
	D1-D2	PA01-A404	握式把手小總成	Delta handle assy.	1		
	D1	PM02-0107-D1	5KVR鐵片	5KVR bracket	1		
	D2	PP02-0502	握套泡綿	Hand grip	2		
	E1	PM90-0100	籃子	Basket	1		

2. CHASSIS COVER ASSEMBLY



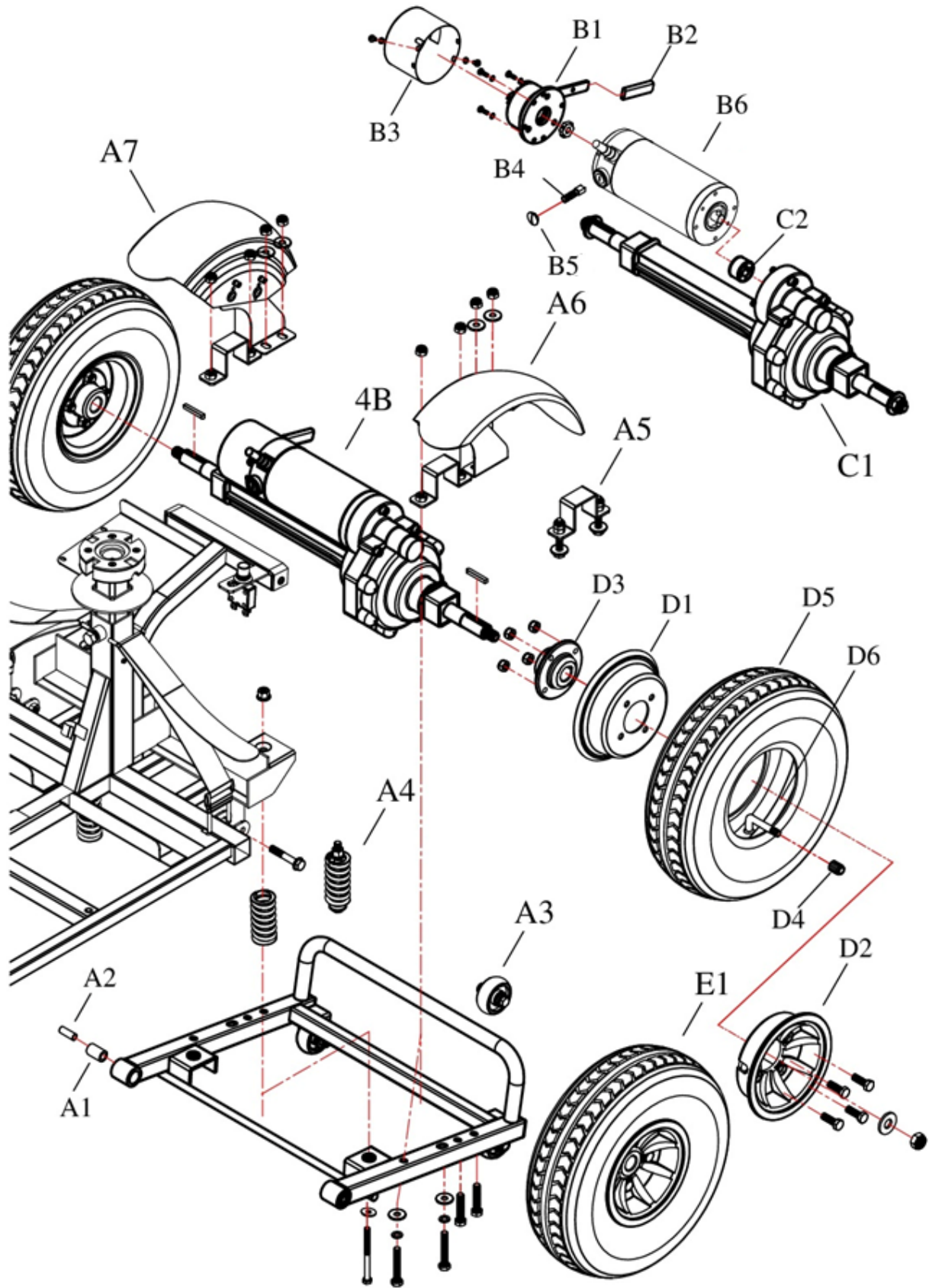
3. FRONT CHASSIS ASSEMBLY



3. FRONT CHASSIS ASSEMBLY

販售 記號	項目	品號	中文品名	英文品名	數量	備註	GBP
	A1-D1						
	A1-A2	AB06-0530	前車架總成	Front chassis assy.	1		
	A1	PP90-0401	電瓶束帶	Battery strap	2		
	A2	PV00-0702-1	高低調整座螺栓	Screw	1	7/16×15×50L	
	B1-B2	PA06-A701	高低調整座小總成	Seat post assy.	1		
	B1	PM06-0307	高低調整座	Seat post			
	B2	PP06-0202	高低調整座墊片	Seat post spacer	1		
	C1	PM06-0208	前保險桿	Front bumper	1		
	D1	PP06-0102	後橡膠套(平面)	Rubber cover	1		

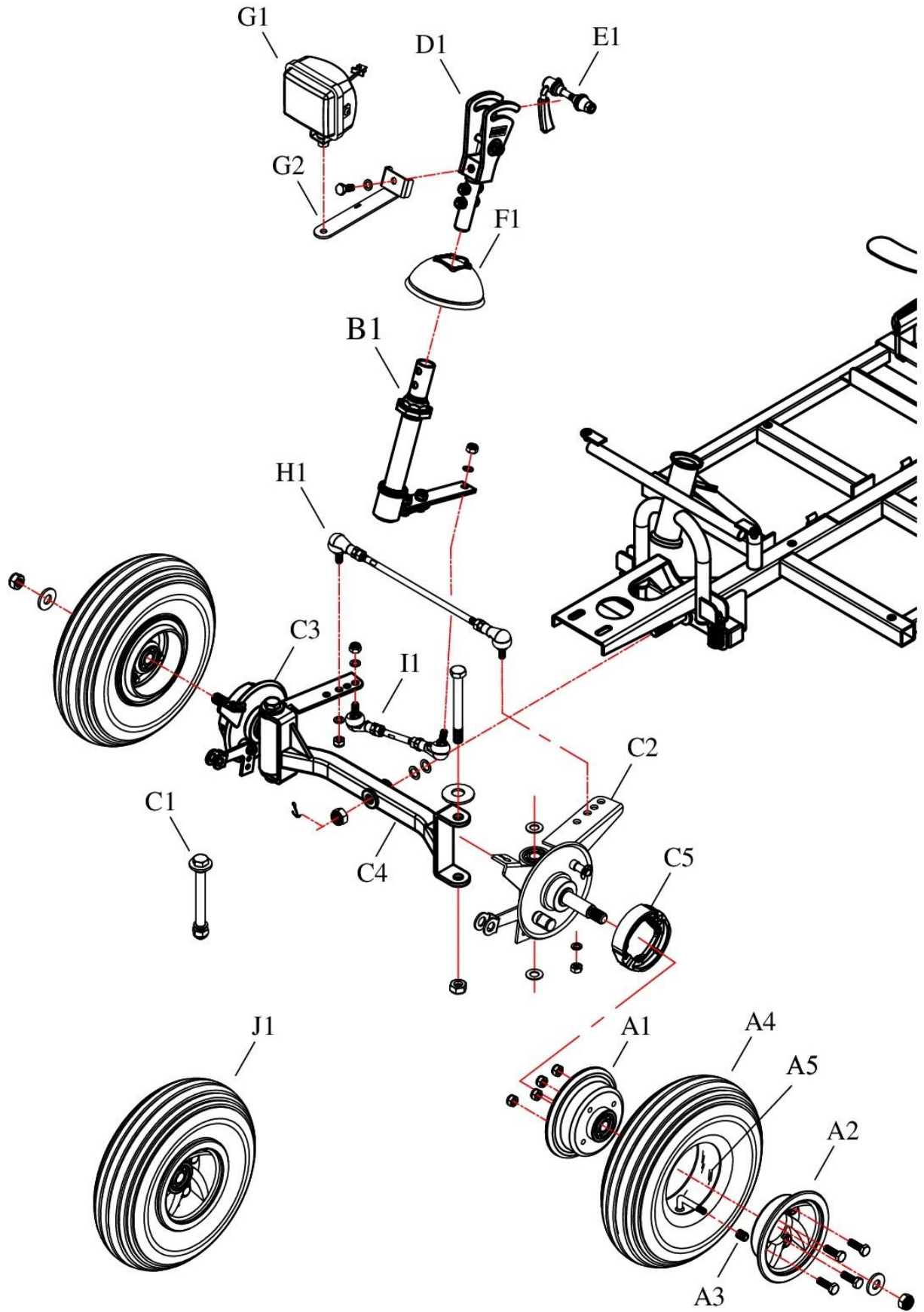
4. REAR CHASSIS ASSEMBLY-DRIVE SYSTEM



4. REAR CHASSIS ASSEMBLY-DRIVE SYSTEM

販售 記號	項目	品號	中文品名	英文品名	數量	備註	GBP
	A1-D6						
	A1-A3	AB07-0530	後車架總成	Rear chassis assy.	1		
	A1	PM00-0107-1	強化塑膠軸套	Plastic Bushing	2	Do19×Di11×29.9L	
	A2	PM00-0114	套筒	Bushing	2	Do11×di8×30L	
	A3	PA07-A106	小防傾輪小總成	Anti-tip wheel assy.	2		
	A4	PA06-B100	大彈簧小總成	Spring assembly	2		
	A5	PA07-B400	差速器固定鐵片小總成	Bracket	2		
	A6	PA07-B104-L	防水罩小總成-左	Mud guard assy.	1	Left	
	A7	PA07-B104-R	防水罩小總成-右	Mud guard assy.	1	Right	
	B1-C1	AC11-1903-SY51A	差速器總成	Transaxle assy.	1	FK-101	
	B1-B5	PA05-A125-SY51A	馬達小總成	Motor assy.	1	5100RPM/450W	
	B1	PM11-0105-P	剎車器45KG	Magnetic brake	1		
	B2	PM11-0403-59.5	馬達碳刷	Carbon brush	2		
	B3	PP11-0301	離合器拉桿膠套-(紅)	Lever padding	1	Red	
	B4	PP11-0604	剎車蓋	Brake cap	1		
	B5	PP11-0201	碳刷蓋	Carbon brush cap	2		
	B6	PM11-0329-SY51A	馬達	Motor	1		
	C1	PA11-A900	差速器小總成	Transaxle	1	含馬達連接器	
	C2	PP11-0502	馬達連接器	Shaft	1		
	D1-D6	AC13-0403-DI	後輪總成	Rear wheel assy.	2	Pneumatic tire	
	D1	PM12-0300	鐵圈	Iron rim for 13" tire	1	13"	
	D2	PM12-0406	鋁圈	Aluminum rim for 13" tire	1	13"	
	D3	PM13-0104	六角中碳後輪接器	Rear wheel flange	1		
	D4	PP92-0001	風嘴蓋	Valve	1		
	D5	PP92-0401-DI	輪胎	Tire	1		
	D6	PP93-0401-I	內胎	Tire inner tube	1		
	E1	AC13-0403-DIPU	後輪總成	Rear wheel assy.	2	Sold tire	

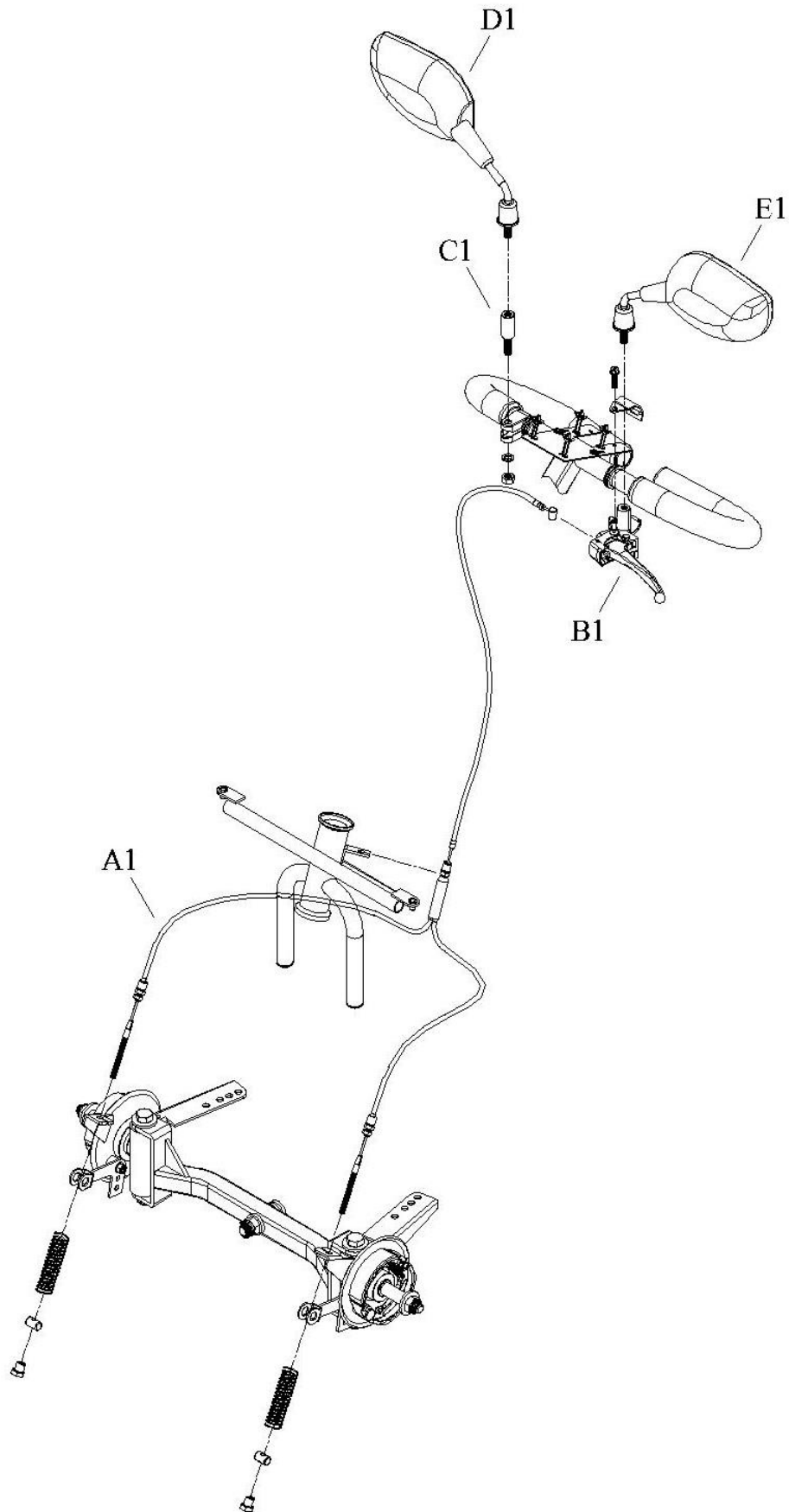
5. STEERING



5. STEERING

販售記號	項目	品號	中文品名	英文品名	數量	備註	GBP
	A1-I1						
	A1-A5	AC12-0505-DI	前輪剎車鼓總成	Brake drum assy.	2	Pneumatic tire	
	A1	PA19-A500	剎車鼓小總成	Brake drum	1		
	A2	PM12-0407	鋁圈	Aluminum rim for 10" tire	1	10"	
	A3	PP92-0001	風嘴蓋	Valve	1		
	A4	PP92-0300-DI	輪胎	Tire	1		
	A5	PP93-0300-I	內胎	Tire inner tube	1		
	B1	AC08-0107-A	L型桿總成	Steering axle assy.	1		
	C1-C4	PA00-A905	前輪桿總成含轉向心軸	Front axle assy.	1		
	C1	PA06-B300	M12螺絲小總成	M12 Screw	2	M12×P1.75×117L	
	C2	PM09-0106-L	轉向心軸-左	Turning axle	1	Left	
	C3	PA09-A300-R	轉向心軸小總成-右	Turning axle assy.	1	Right	
	C4	PM09-0507	前輪桿	Front axle	1		
	C5	PM19-0701	剎車來令片含彈簧	Brake pads assy.	1		
	D1	PA10-A100	角度調整器小總成	Steering lock assy.	1		
	E1	PA10-A200	迫緊拉桿小總成	Quick release assy.	1		
	F1	PP10-0101	前橡膠套	Rubber cover	1		
	G1-G2	PA06-A110	前大燈總成	Head light assy.	1		
	G1	PKE3-0112	前大燈	Head light	1		
	G2	PM10-0409	前大燈固定片(加長)	Head light bracket	1		
	H1	PA09-A214-F	長連桿小總成	Steering connecting rod assy.	1	Long	
	I1	PA09-A213-F	短連桿小總成	Steering connecting rod assy.	1	Short	
	J1	AC12-0505-DIPU	前輪剎車鼓總成	Brake drum assy.	2	Soild tire	

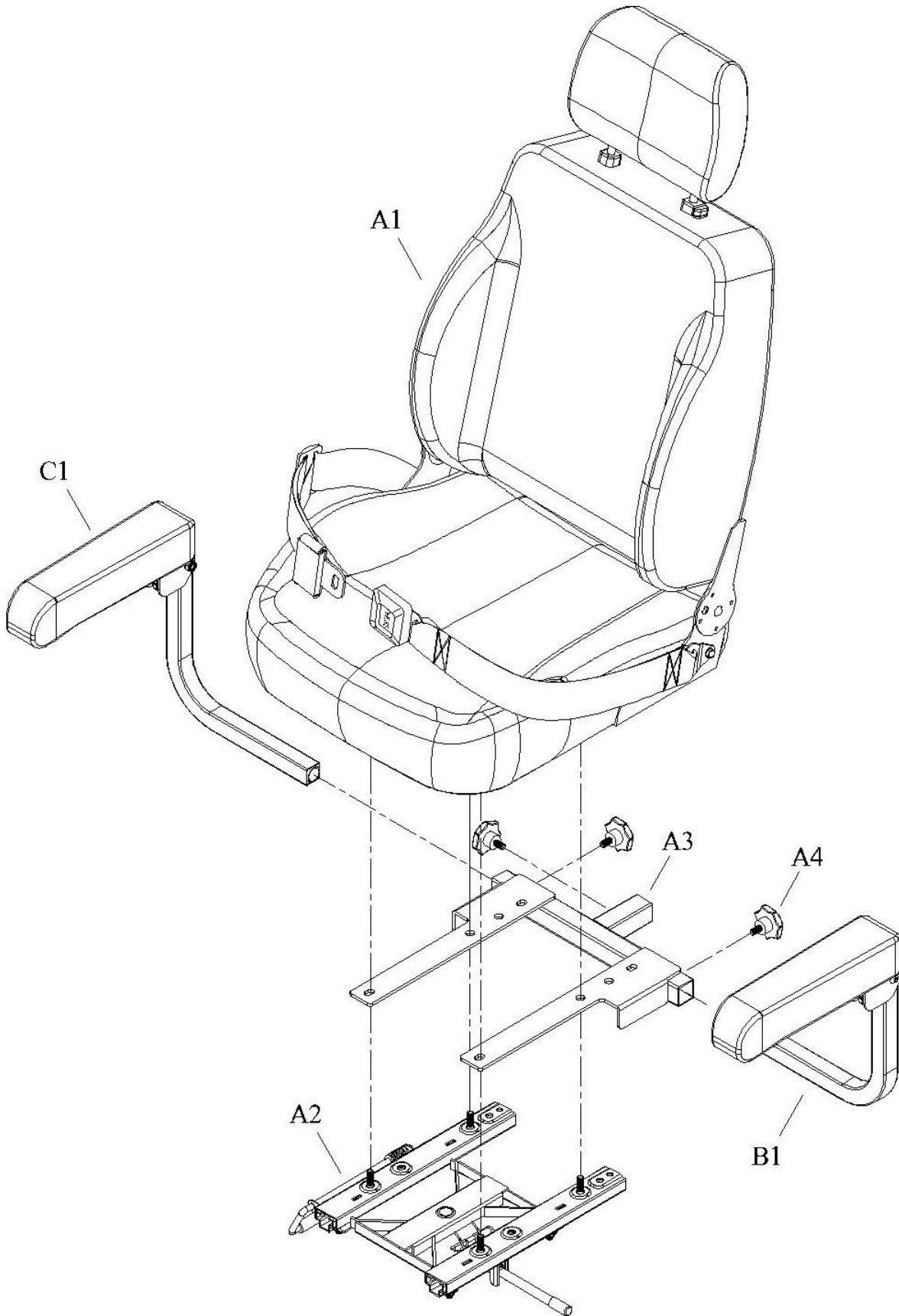
6. HAND BRAKE ASSEMBLY



6. HAND BRAKE ASSEMBLY

販售 記號	項目	品號	中文品名	英文品名	數量	備註	GBP
	A1-E1						
	A1	PA19-A401	剎車鋼線小總成	Brake cable	1		
	C1	PM03-0400	後視鏡墊高片	Mirror spacer	1		
	B1	PM19-0101-L/D	手剎車	Brake lever assy.	1	Left	
	D1	PP90-0203-R	後照鏡-右	Mirror	1	Right	
	E1	PP90-0203-L	後照鏡-左	Mirror	1	Left	

7.SEAT ASSEMBLY



8.CONSOLE AND WIRING SYSTEM

