

FreeRider[®]

SPARE PARTS MANUAL

Mayfair
Mayfair

FRS034BAUKNB
FR168-4

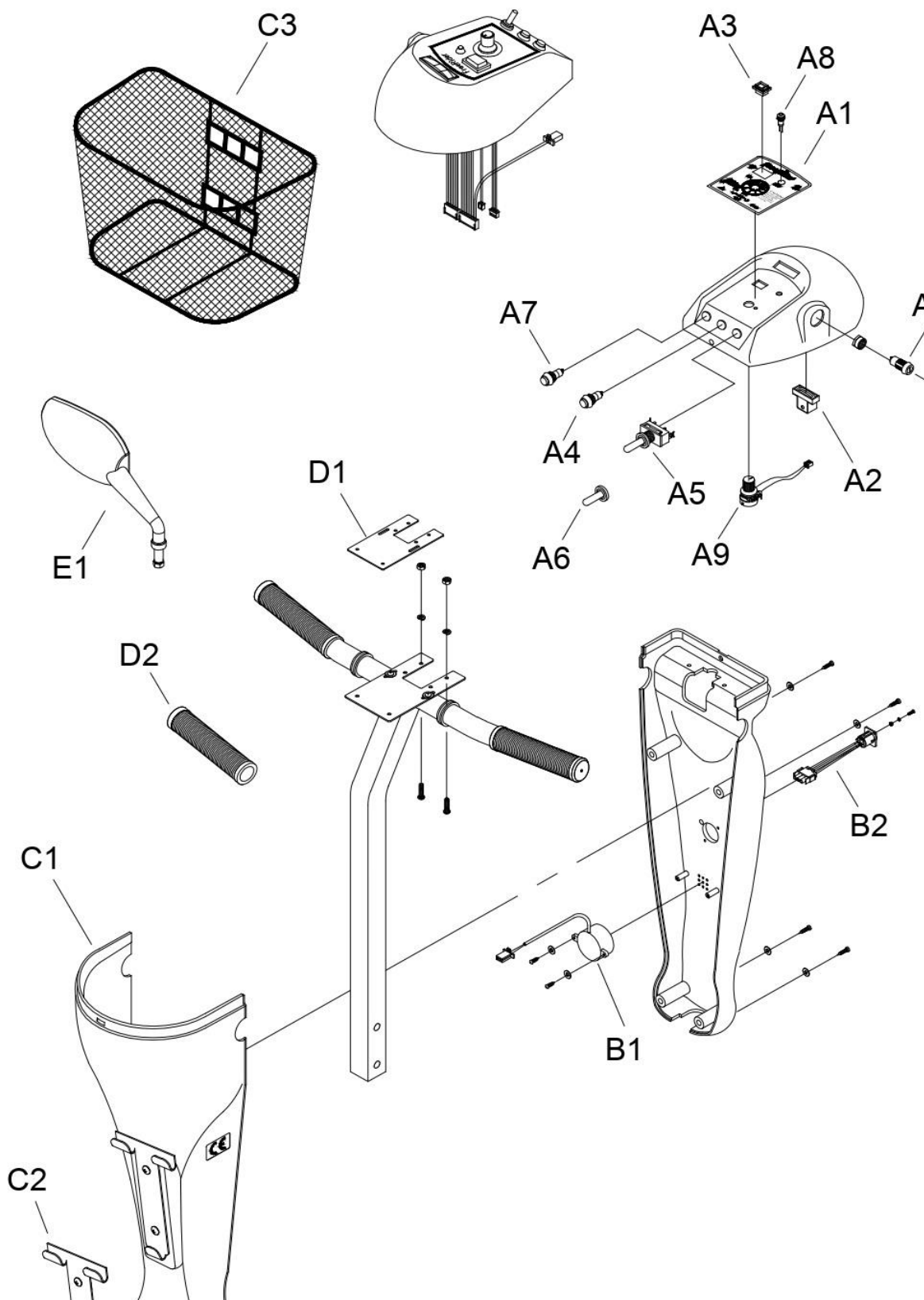




INDEX

1. **HANDLEBAR ASSEMBLY**.....
2. **CHASSIS COVER ASSEMBLY**.....
3. **CHASSIS ASSEMBLY**.....
4. **DRIVE SYSTEM**.....
5. **STEERING**.....]
6. **SEAT ASSEMBLY**.....
7. **CONSOLE AND WRING SYSTEM**.....]

1. HANDLEBAR ASSEMBLY

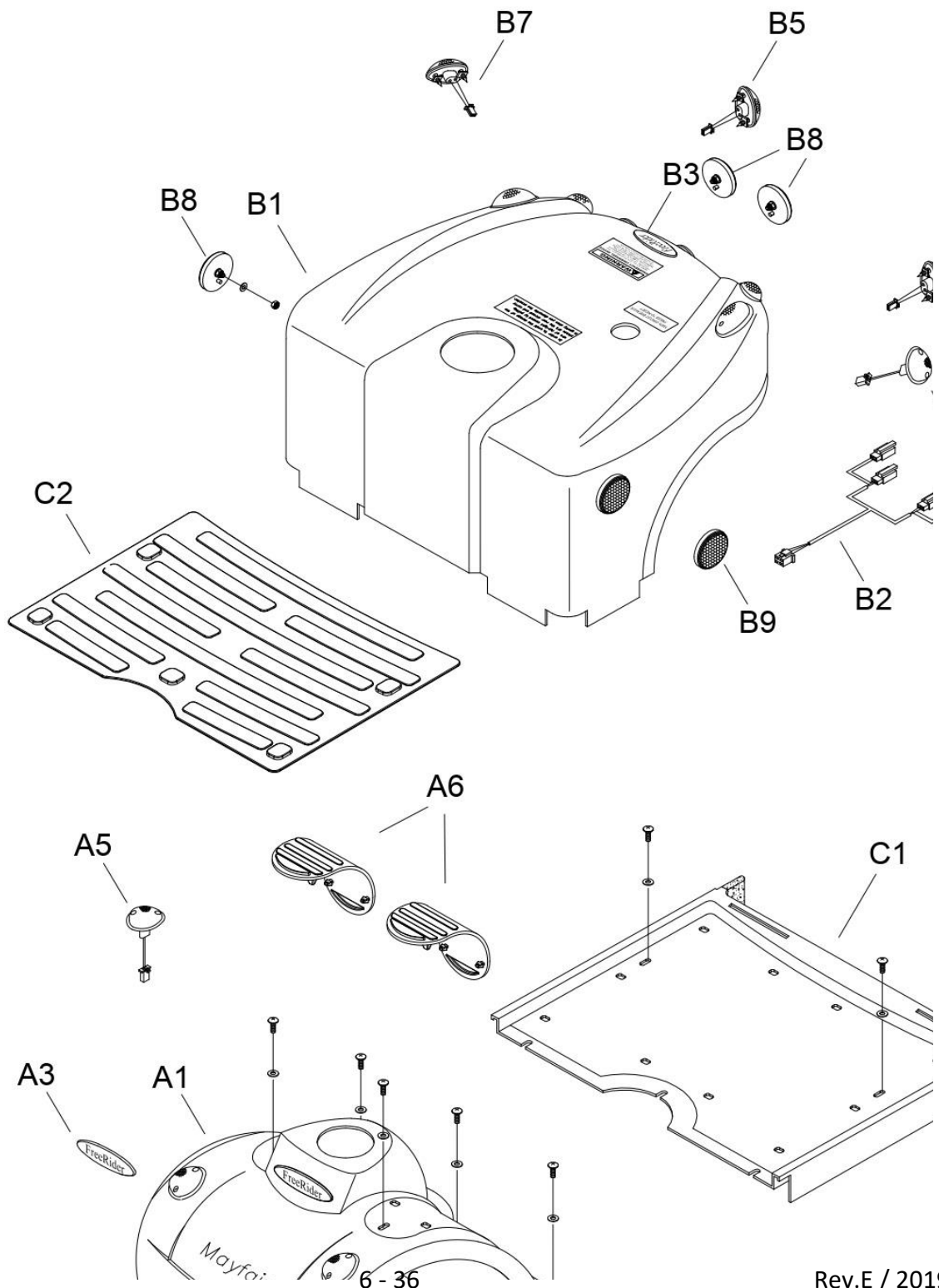


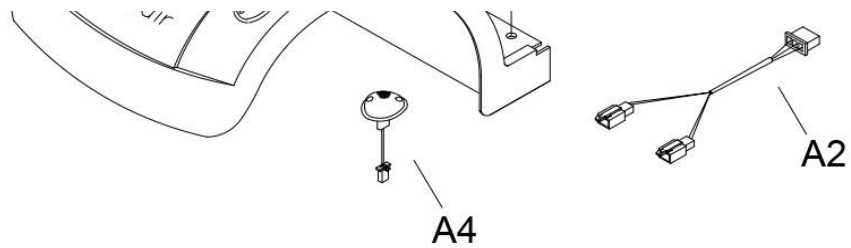


1. HANDLEBAR ASSEMBLY

販售 Selling	項目 ITEM	品號 Part Number	中文品名 Part Name-CN	英文品名 Part Name-EN	數量 QTY
	A1 – E1				
	A1 – A11	AA01-0100-◎	把手上蓋總成	Top console cover assy.	1
	A1	PL01-0100	面板貼紙	Sticker	1
	A2	PKE1-0700	電錶	Battery meter	1
	A3	PAE1-0800	大燈開關	Head light switch	1
	A4	PKE1-0103	喇叭開關	Horn switch	1
	A5	PKE1-0105	搖頭開關	Indicator switch	1
	A6	PP01-0200	搖頭開關蓋	Indicator switch cap	1
	A7	PKE1-0101	警示開關	Warning switch	1
	A8	PKE1-0800	LED指示燈(綠)	Status light(Green)	1
	A9	PAE1-0100-MO	20KVR小總成	20KVR Potentiometer	1
	A10	PP01-0500	速度旋鈕	Speed knob	1
	A11	PM01-0100	鑰匙開關	Key switch	1
	A12	PM90-0900	鑰匙	Key	1
	B1 – B2	AA02-0100-◎	把手後蓋總成	Tiller rear cover assy.	1
	B1	PKE1-0603	喇叭-長	Horn	1
	B2	PAE1-0405-NP-A00	充電座小總成	Charge socket assy.	1
	C1	AA03-0400-◎	把手前蓋總成	Tiller front cover assy.	1
	C2	PM03-0300-D1	籃子掛鉤	Basket hook	1
	C3	PM90-0100	籃子	Basket	1
	D1 – D2	PA01-A300	T型把手小總成	Tiller handlebar assy.	1
	D1	PM02-0105	5KVR固定鐵片	Potentiometer plate	1
	D2	PP02-0209	把手握套	Hand grip	2
	E1	PP90-0203-R	後照鏡-右	Mirror(Right)	1

2. CHASSIS COVER ASSEMBLY

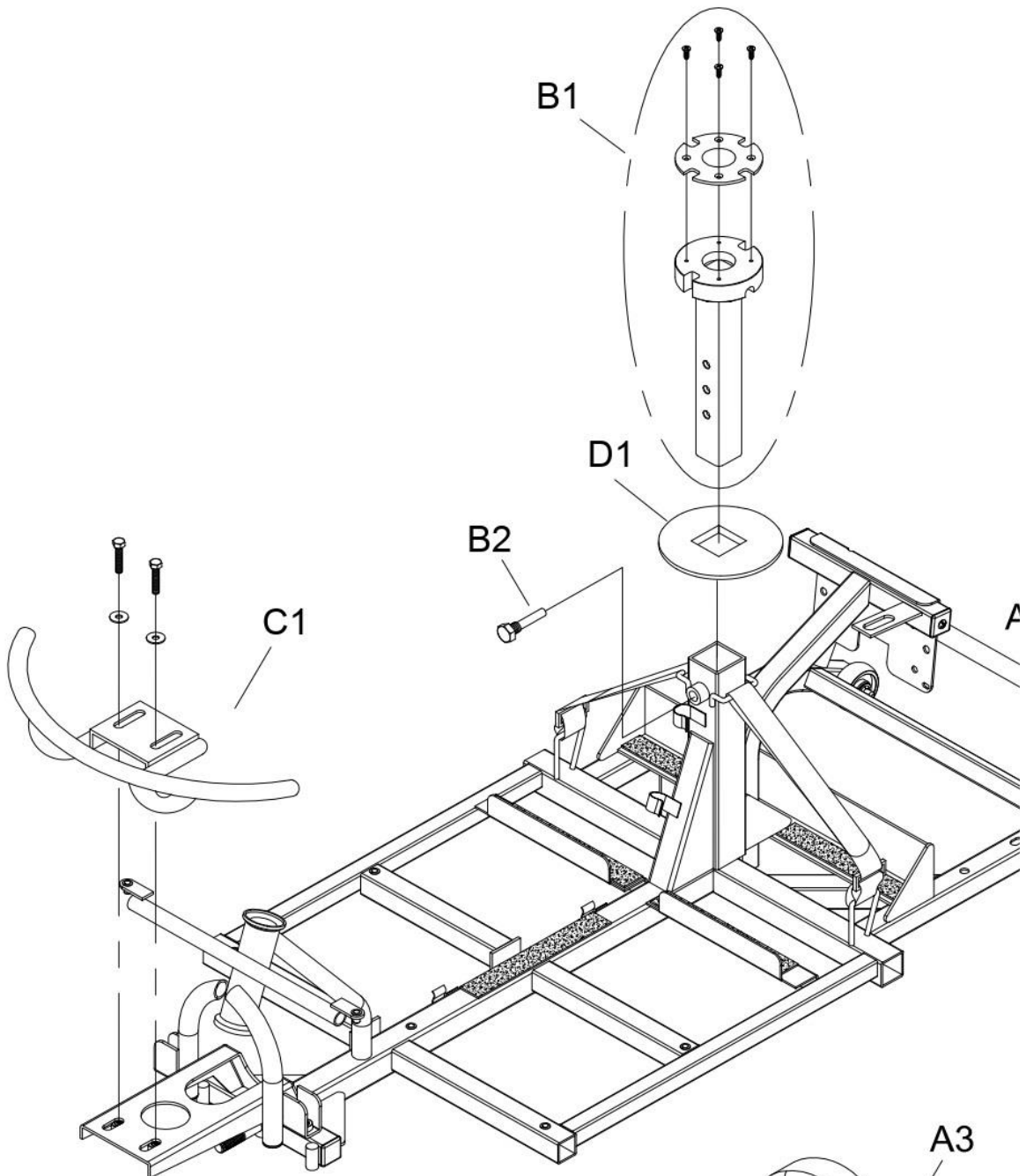


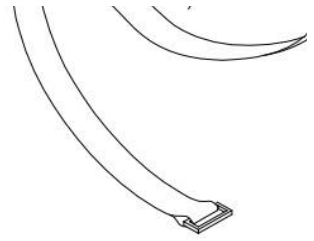


2. CHASSIS COVER ASSEMBLY

販售 Selling	項目 ITEM	品號 Part Number	中文品名 Part Name-CN	英文品名 Part Name-EN	數量 QTY
	A1 - C2				
	A1 - A5	AA04-1400-◎	前車殼總成	Front chassis cover assy.	1
	A1	PP04-0112-◎	前車殼	Front chassis cover	1
	A2	PKE3-0400	前方向燈線空中接頭	Front indicator adapter wire	1
	A3	PL00-0100	橢圓型貼紙	Sticker	1
	A4	PAE3-0200-L	方向燈小總成-左	Indicator assy.(Left)	1
	A5	PAE3-0200-L/R	方向燈小總成-後左/前右	Indicator assy.(Right)	1
	A6	PP04-0531	腳踏墊	PVC foot mat	2
	B1 - B9	AA05-1200-◎	後車殼總成	Rear chassis cover assy.	1
	B1	PP05-0106-◎	後車殼	Rear chassis cover	1
	B2	PKE3-0500	後方向燈線空中接頭	Rear indicator adapter wire	1
	B3	PL00-0100	橢圓型貼紙	Sticker	1
	B4	PAE3-0100-L	後大燈小總成(紅)-左	Tail light assy.(Left)	1
	B5	PAE3-0100-R	後大燈小總成(紅)-右	Tail light assy.(Right)	1
	B6	PAE3-0200-L/R	方向燈小總成-後左/前右	Indicator assy.(Left)	1
	B7	PAE3-0200-R	方向燈小總成-右	Indicator assy.(Right)	1
	B8	PP05-0400-R	反光片-紅	Reflector (Red)	2
	B9	PP05-0400-Y	反光片-黃	Reflector (Orange)	2
	C1	PP04-1100-D1	腳踏板	Footplate cover	1
	C2	PP04-0530	腳踏墊	PVC foot mat	1

3. CHASSIS ASSEMBLY

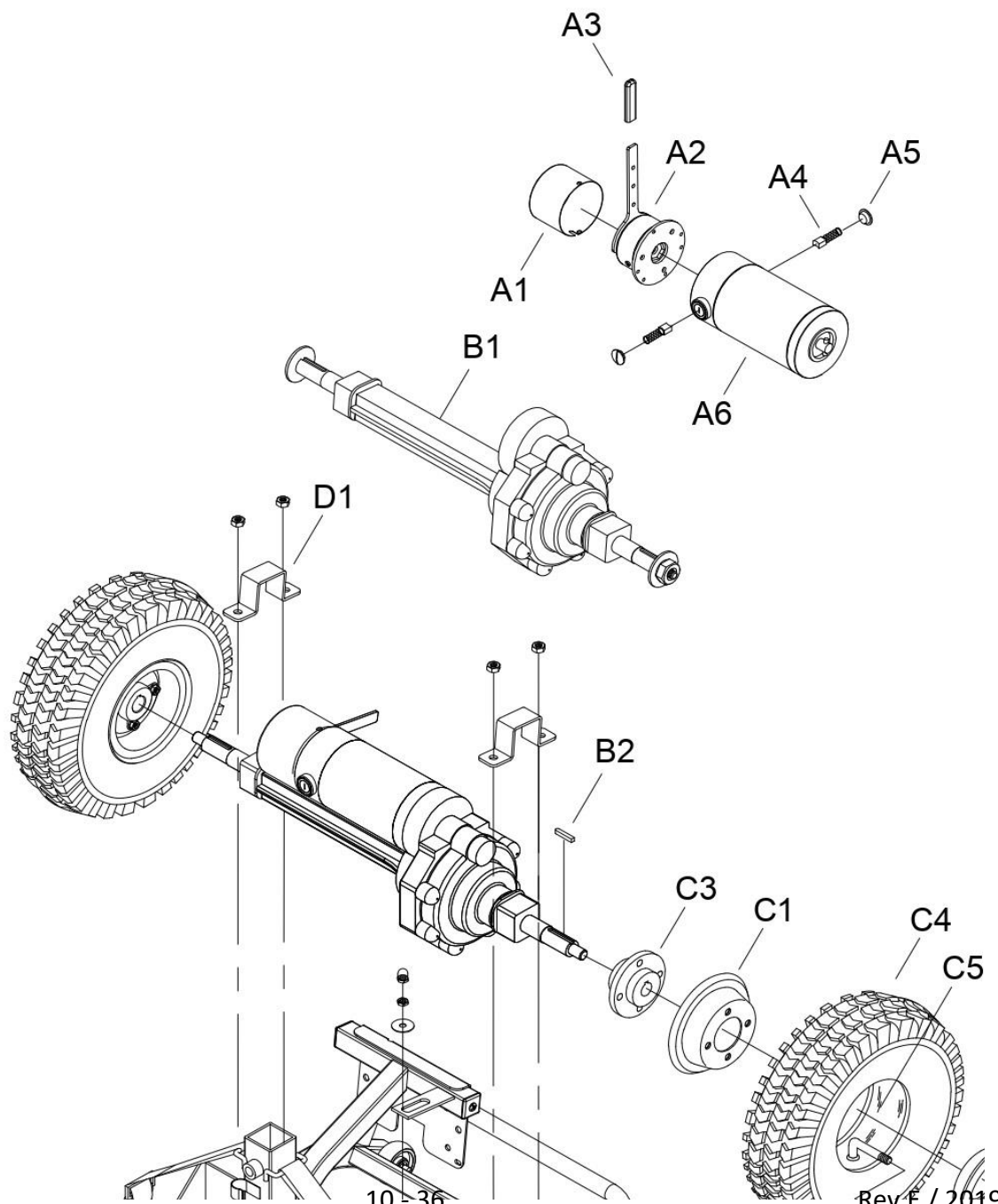


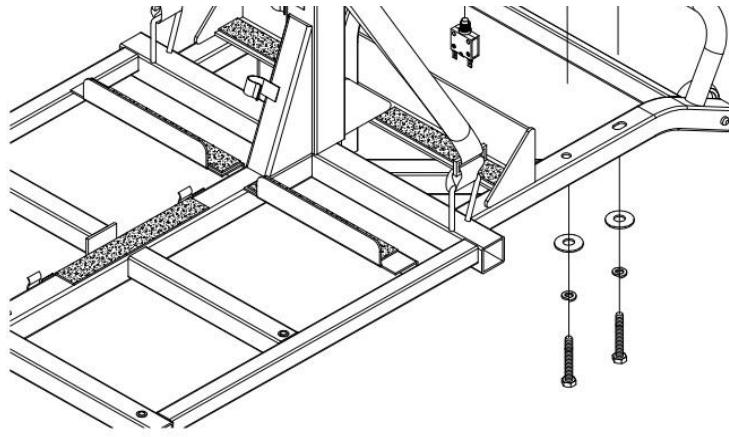


3. CHASSIS ASSEMBLY

販售 Selling	項目 ITEM	品號 Part Number	中文品名 Part Name-CN	英文品名 Part Name-EN	數量 QTY
	A1-D1				
	A1	AB06-0505	車架總成	Chassis assy.	1
	A2	PA07-A102	防傾輪小總成	Anti-tip wheel assy.	2
	A3	PP90-0401	電瓶束帶	Battery fasten strap	2
	B1	PA06-A701-1	高低調整座小總成	Seat post assy.	1
	B2	PV00-0702-1	高低調整座螺栓	Screw	1
	C1	PA06-A406	前保險桿小總成	Front bumper assy.	1
	D1	PP06-0102	後橡膠套	Rubber cover	1

4. DRIVE SYSTEM

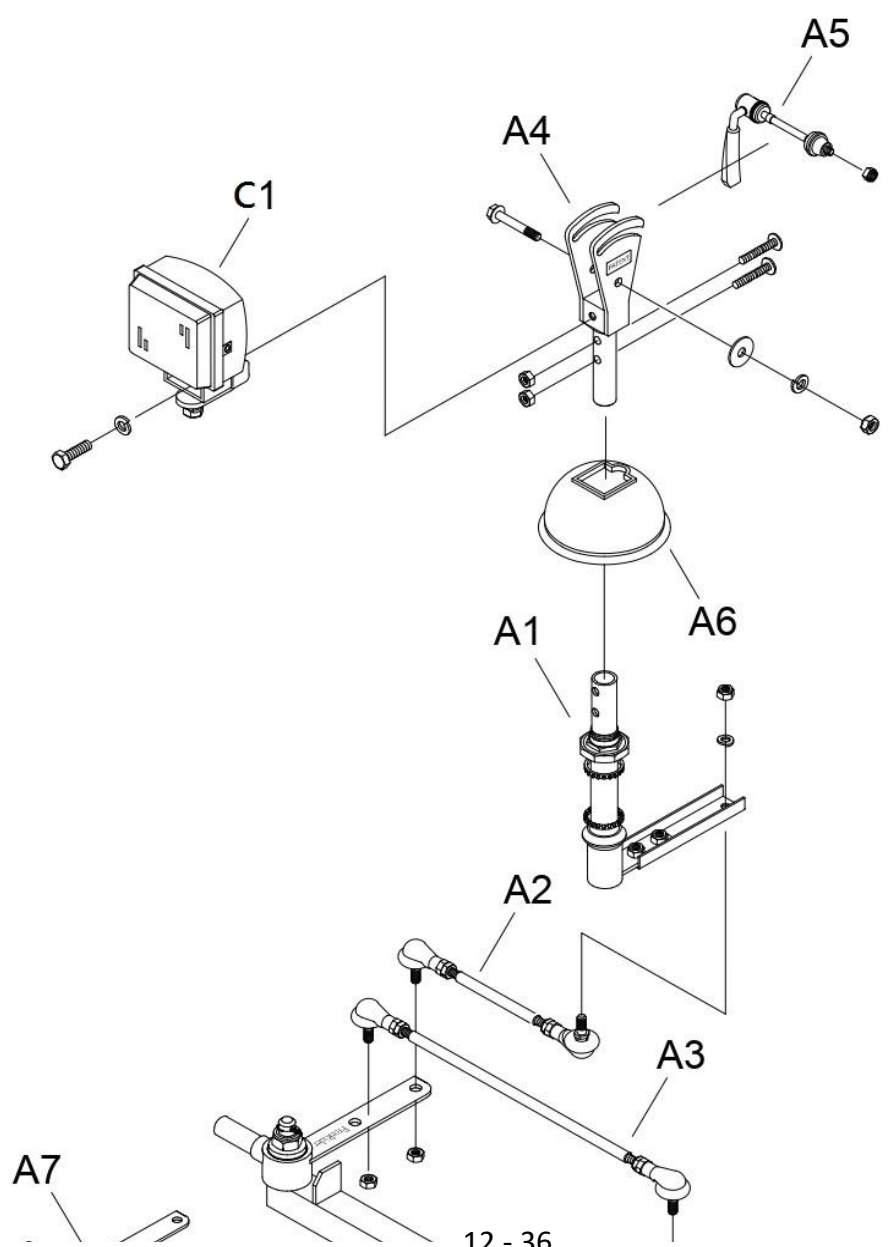


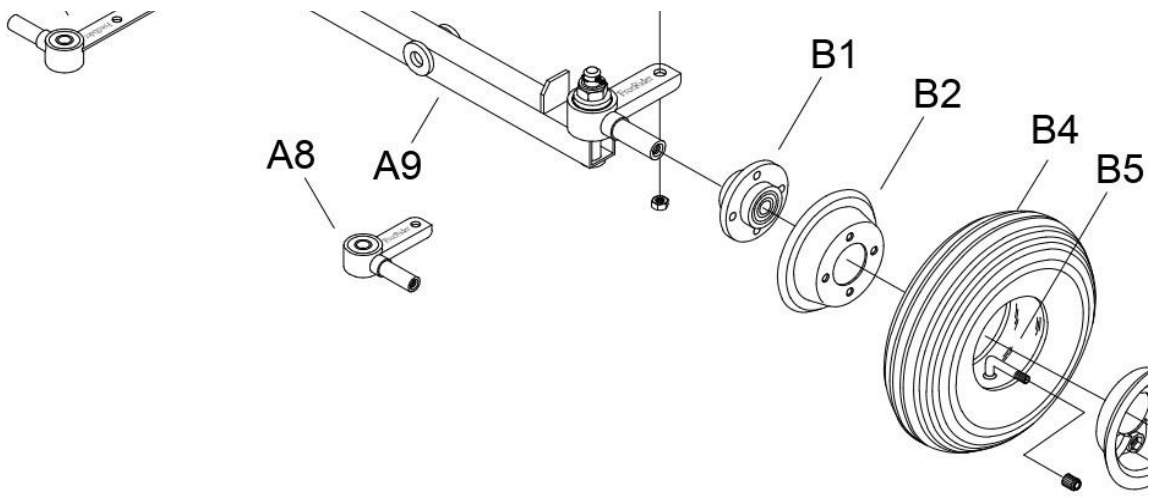


4. DRIVE SYSTEM

販售 Selling	項目 ITEM	品號 Part Number	中文品名 Part Name-CN	英文品名 Part Name-EN	數量 QTY
	A1-D1				
	A1-B2	AC11-1701-SY36C	差速器總成	Transaxle/Motor/Brake assy.	1
	A1-A6	PA05-A109-SY36C	馬達小總成	Motor/Brake assy.	1
	A1	PP11-0604	剎車蓋	Brake cover	1
	A2	PM11-0105-P	剎車器	Magnetic brake	1
	A3	PP11-0301	離合器拉桿膠套	Plastic cover for wigwag	1
	A4	PM11-0403-50	馬達碳刷	Motor carbon brush	2
	A5	PP11-0201	碳刷蓋	Carbon brush cap	2
	A6	PM11-0310-SY36B	馬達	Motor	1
	B1	PA11-B400	差速器小總成	Transaxle	1
	B2	PM13-0201	單圓鍵	Axle key	2
	C1-C5	AC13-0503-DI	後輪總成(氣胎)	Rear wheel assy.	2
	C1	PM12-0302	鐵圈	Rim	2
	C2	PM12-0407	鋁圈	Aluminum rim	2
	C3	PM13-0104	後輪接器	Rear hub	2
	C4	PP92-0301-DI	輪胎	Tyre	2
	C5	PP93-0300-I	內胎	Tube	2
	D1	PM07-0202	差速器固定鐵片	Transaxle plate	2

5. STEERING

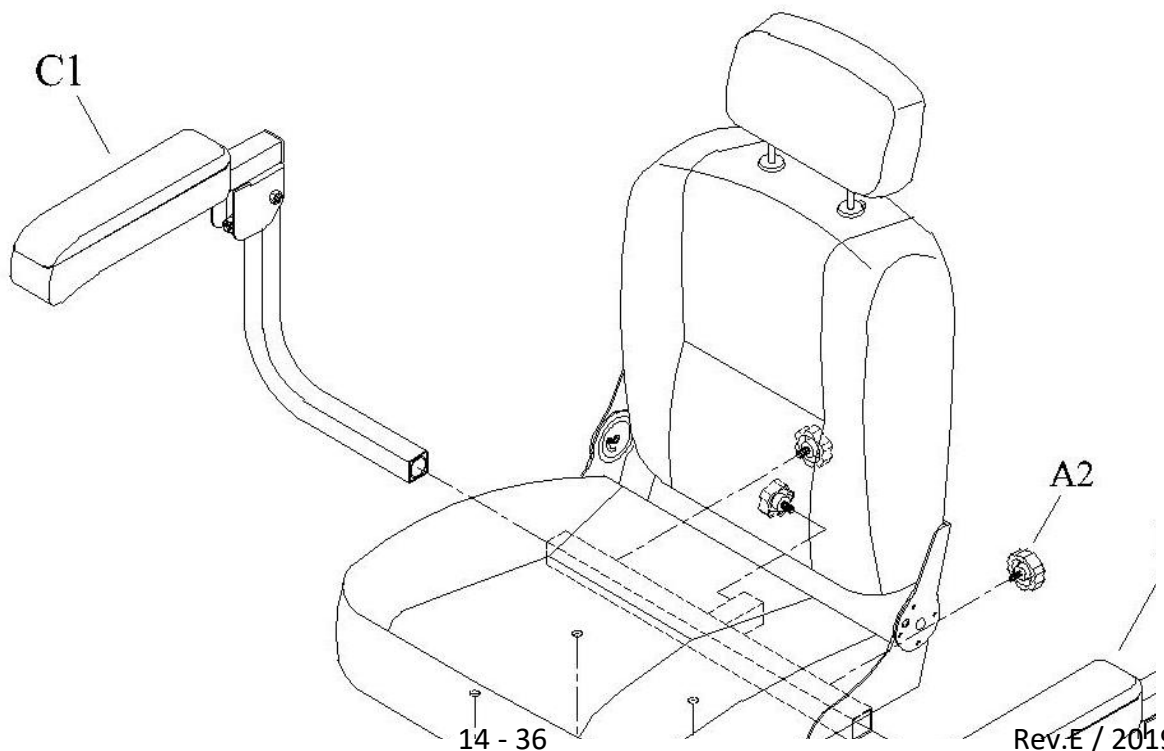


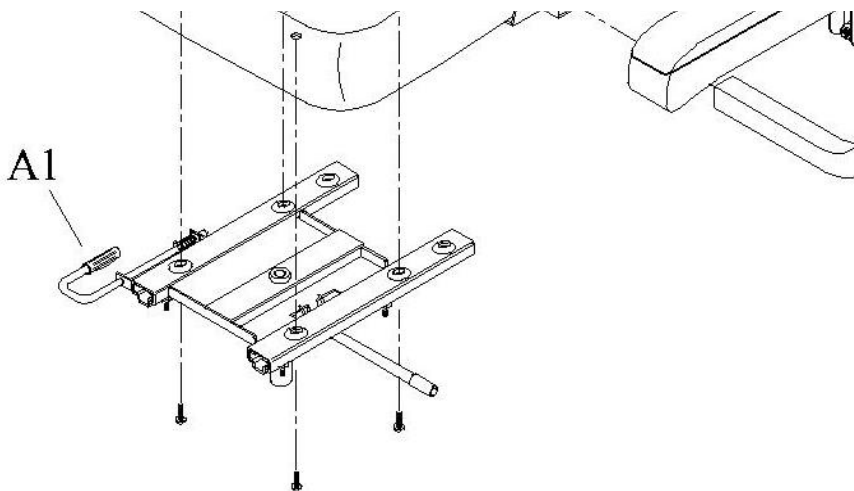


5. STEERING

販售 Selling	項目 ITEM	品號 Part Number	中文品名 Part Name-CN	英文品名 Part Name-EN	數量 QTY
	A1 – C1				
	A1	AC08-0105	L型桿總成	Steering shaft assy.	1
	A2	PA09-A213-F	短連桿小總成	Short connecting rod assy.	1
	A3	PA09-A200-F	長連桿小總成	Long connecting rod assy.	1
	A4	PA10-A100	角度調整器小總成	Handlebar jointbase assy.	1
	A5	PA10-A200	迫緊拉桿小總成	Tighten handle assy.	1
	A6	PP10-0101	前橡膠套	Rubber cover	1
	A7	PA09-A600	轉向器(長)小總成	Turning axle assy.(long)	1
	A8	PA09-A601	轉向器(短)小總成	Turning axle assy.(short)	1
	A9	PM09-0500	前輪桿	Front axle	1
	B1 – B5	AC12-0502-DI	前輪總成(氣胎)	Front wheel assy.	2
	B1	PA12-A100	前輪連接器小總成	Front hub	2
	B2	PM12-0302	鐵圈	Rim	2
	B3	PM12-0407	鋁圈	Aluminum rim	2
	B4	PP92-0300-DI	輪胎	Tyre	2
	B5	PP93-0300-I	內胎	Tube	2
	C1	PA06-A102	前大燈總成	Head light assy.	1

6. SEAT ASSEMBLY

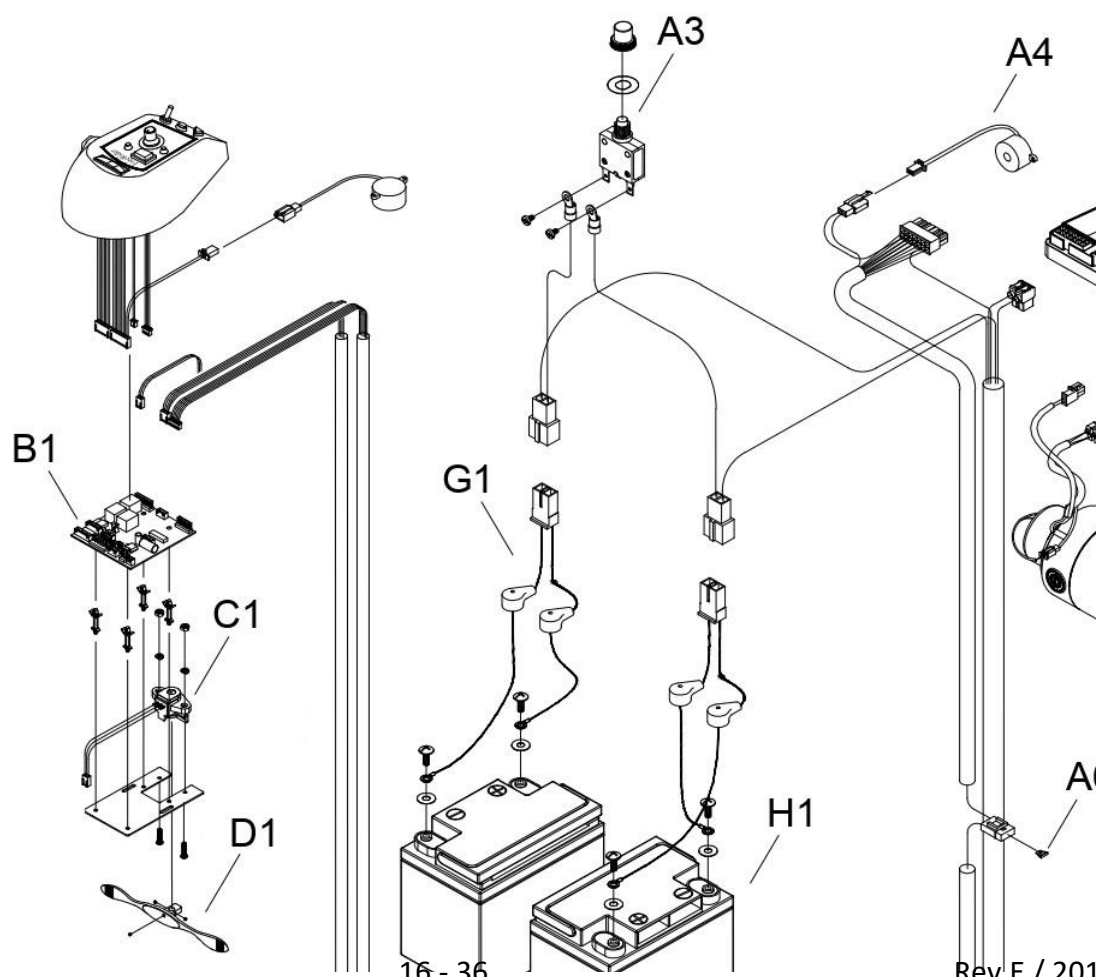


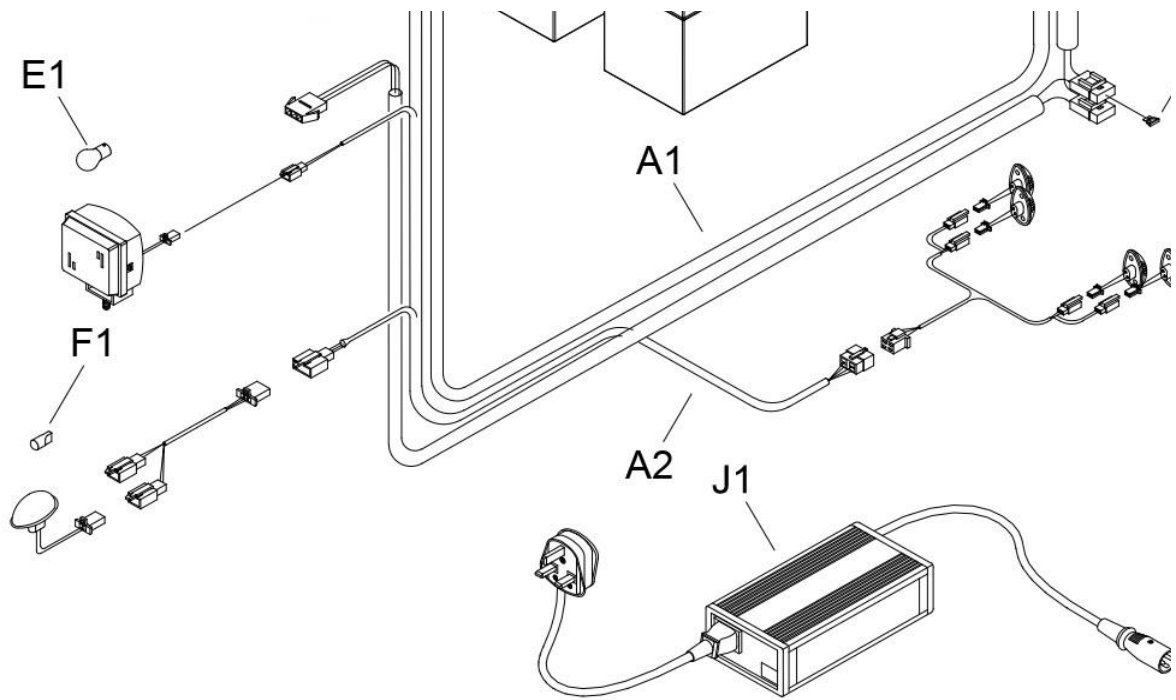


6. SEAT ASSEMBLY

販售 Selling	項目 ITEM	品號 Part Number	中文品名 Part Name-CN	英文品名 Part Name-EN	數量 QTY
	A1-C1				
	A1-C1	AD00-0220-G1	豪華座椅大總成	Seat assy.	1
	A1-A2	AD15-0203-G1	座椅總成	Seat assy.	1
	A1	PA15-A104	承座小總成	Seat base assy.	1
	A2	PP00-0200	梅花旋鈕	Knob	3
	B1	AD14-0600-L-A00	座椅扶手總成-左	Armrest assy.(Left)	1
	C1	AD14-0600-R-A00	座椅扶手總成-右	Armrest assy.(Right)	1

7.CONSOLE AND WIRING SYSTEM





7. CONSOLE AND WIRING SYSTEM

販售 Selling	項目 ITEM	品號 Part Number	中文品名 Part Name-CN	英文品名 Part Name-EN	數量 QTY
	A1 – J1				
	A1	PKE2-0222	主線	Main cable	1
	A2	PKE3-0606	前後大燈線	Light cable	1
	A3	PKE2-0403	無熔絲開關	Circuit breaker	1
	A4	PKE1-0601	倒車喇叭	Horn	1
	A5	PKE1-1002	保險絲	Fuse	1
	A6	PKE1-1002-2	保險絲	Fuse	1
	B1	PAE1-0300-B1	PCB板	P.C.B	1
	C1	PA02-A204	5KVR小總成	5KVR Potentiometer	1
	D1	PM02-0300-D2	前後撥桿	Wig wag accelerator	1
	E1	PK00-0102	燈泡	Bulb	1
	F1	PK00-0101	燈泡	Bulb	6
	G1	PAE3-0300-R-1	電源線小總成	Battery cable assy.	2
	H1	PK90-0205-KL	電瓶	Battery	2
	I1	PKE2-0112	下控制器	Controller	1
	J1	PK90-C402-1	充電機	Charger	1

--P.4

--P.6

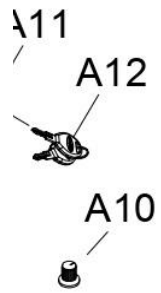
--P.8

--P.10

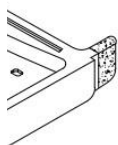
P.12

.P.14

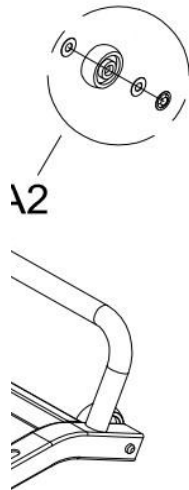
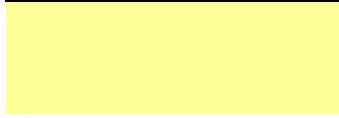
P.16

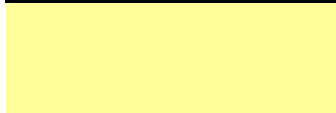


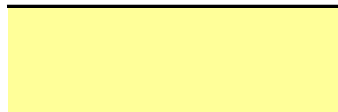
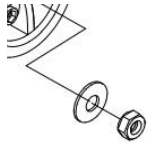
備註 Remark	GBP
◎=B2 : Blue、R1 : Red	
W/speed knob	
◎=B2 : Blue、R1 : Red	
◎=B2 : Blue、R1 : Red (W/Basket hook)	



備註 Remark	GBP
◎=B2 : Blue 、 R1 : Red	
◎=B2 : Blue 、 R1 : Red	
FreeRider	
Front	
◎=B2 : Blue 、 R1 : Red	
◎=B2 : Blue 、 R1 : Red	
FreeRider	
Rear	

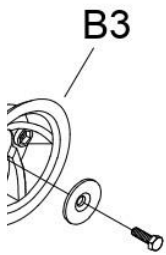






備註 Remark	GBP
250W	
19.25:1	
Pneumatic tire	
4"	
4"	
10"	



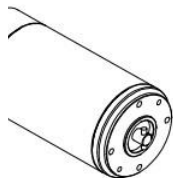
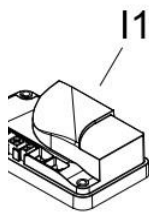


備註 Remark	GBP
Pneumatic tire	
4"	
4"	
10"	



B1





6

A5



備註 Remark	GBP
35A	
10A	
10A	
24V/21W	
24V/5W	
36A	
DR90	
4A	

